

# MONONGAHELA RIVER L/D 2,3,&4

IWUB #102 – Springfield, VA

Mr. Stephen Fritz, PE, PMP  
LRP MEGA Projects Program Manager  
11 April 2024



U.S. ARMY

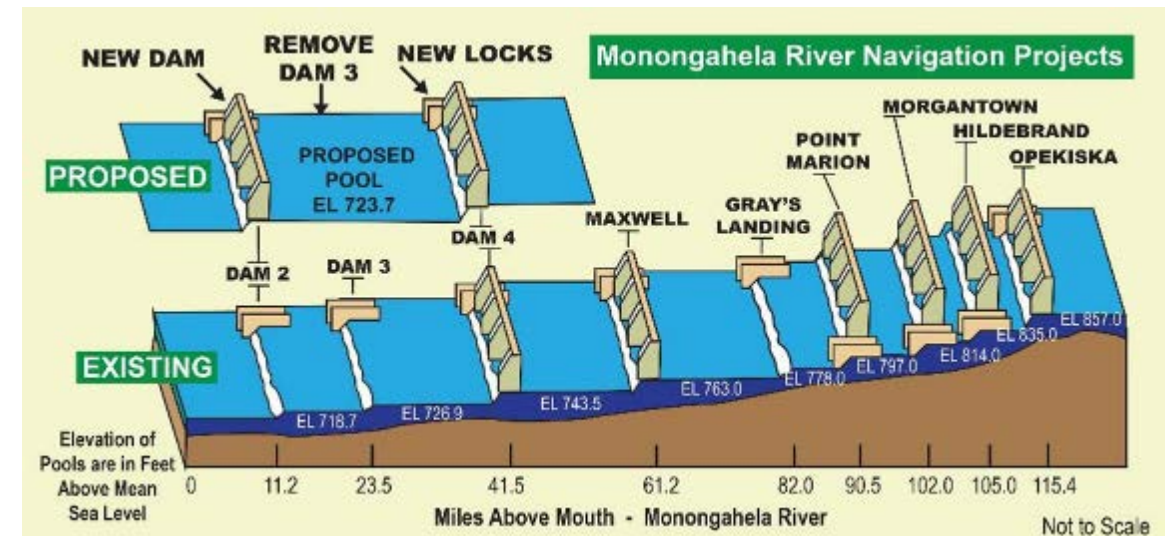


US Army Corps  
of Engineers

# MON RIVER LOCKS & DAMS 2, 3, & 4 SCOPE

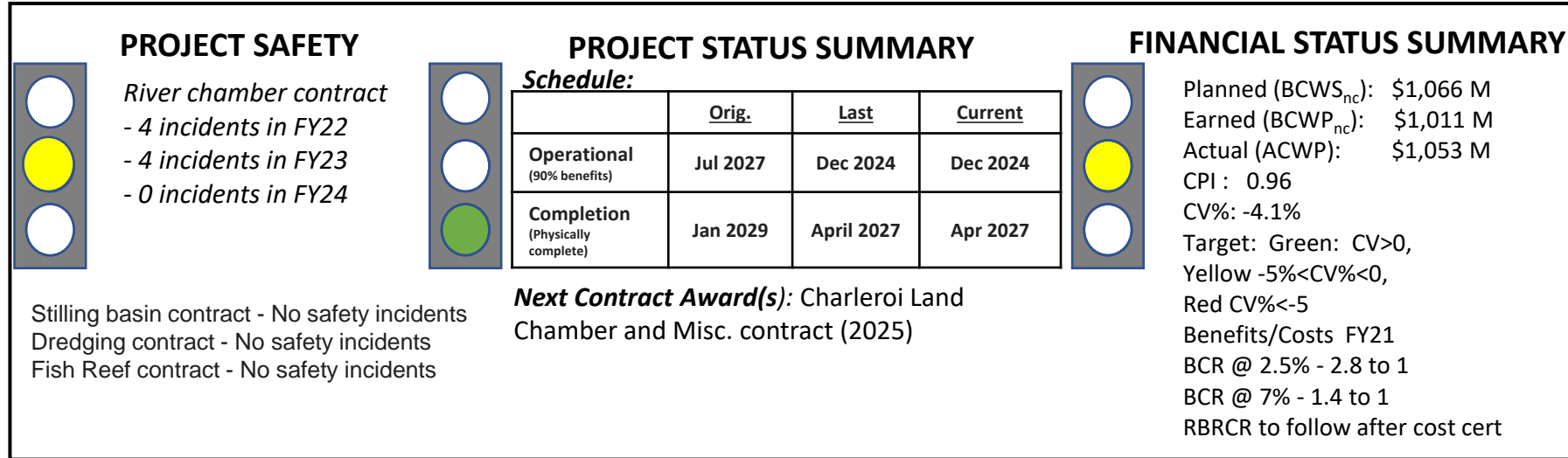
## Major Project Features

- Braddock locks and dam (L/D 2): New gated dam Completed 2004
- Charleroi locks and dam (L/D 4):
  - Two new larger lock chambers (84' wide x 720' long)
    - River chamber (now operational from middle wall control shelters)
    - Land chamber deferred
  - Dam stilling basin extension
- Locks and Dam 3 removal
- Pool 3 dredging
- Relocations
- Environmental mitigation



# MON RIVER LOCKS AND DAMS 2, 3, AND 4

## BLUF STATUS -SUMMARY DASHBOARD



### EXECUTIVE SUMMARY:

- Continued focus on safety
- FY 2024 appropriations included \$41M for the project
- Cost Update
  - Most recent certification: 2017
  - Evaluating remaining costs and risks
  - Expect new cost estimate this spring



U.S. ARMY



# MON RIVER LOCKS & DAMS 2,3, & 4 KEY ACTIVITIES



Locks and Dam 3 at Elizabeth

## Commentary:

- Charleroi River Chamber
  - New River Chamber is scheduled to open traffic this month
  - Substantial construction completion – **June 2024**
- Charleroi land chamber
  - Land Chamber will be closed to traffic in May
  - Long term closure plans and specifications being developed
- Locks & Dam 3 Removal Contract
  - Begin dam removal to in July 2024.
  - Complete dam removal in December 2024 (**Project Operational**)
  - Navigation restrictions during demolition
- Fish Reef Contract – All reefs have been installed – US Coast Guard is requiring marking
- Charleroi Elevator – Installation underway, contract completion June 2024
- Braddock gallery pumps – Installation underway, contract completion July 2024
- Relocations – Actively engaging owners



U.S. ARMY



# MON RIVER LOCKS & DAMS 2,3, & 4 - FUNDING SUMMARY

Funding Overview		
Authorized Cost:	556,400,000	(Oct 1991)
902 Limit:	1,764,443,000	(Mar 2019)
ARRA (FY09-13):	68,261,203	
PED & EDC Cost:	204,370,000	
S&A Cost:	53,257,000	

	ARRA	CG	IWTF	Total
Total Project Cost (May 2018) *1				\$ 1,233,835,000
Allocations through FY17	\$ 68,261,203	\$ 379,645,646	\$ 379,645,652	\$ 827,552,501
FY18 Allocation		\$ 48,150,000	\$ 48,150,000	\$ 96,300,000
FY19 Allocation		\$ 44,606,606	\$ 44,606,606	\$ 89,213,212
FY20 Allocation		\$ 55,648,770	\$ 55,648,770	\$ 111,297,540
FY21 Allocation				\$ -
FY22 Allocation				\$ -
FY23 Allocation				\$ -
FY24 Allocation *2				\$ -
Total Allocations to Date:	\$ 68,261,203	\$ 528,051,022	\$ 528,051,028	\$ 1,124,363,253
Remaining/Unallocated Balance *2				\$ 109,471,747
Remaining Balance Change From Last Meeting:				\$ -

\*1. A total project cost update is expect to be completed this Spring.

\*2. The project was appropriated \$41 Million, however, those funds have not yet been allocated. Once allocated, the remaining unallocated balance will drop from \$109 Million to \$68 million. It is anticipated that additional funds will be needed to achieve the 90% benefits project and this need will be informed by the cost update.

## Commentary:

- Project cost update – 2024

## Fiscal Year Funding Capabilities:

FY 2024	FY 2025	FY 2026	Total
\$41,000,000	\$0	TBD*3	TBD

\*3. FY26 capability will be determined following the 2024 cost update and the analysis of residual risks





# MON RIVER LOCKS AND DAMS 2, 3, AND 4, PROGRESS AND/OR ISSUES/CHALLENGES



## ISSUES/CHALLENGES

- Funding to achieve 90% benefits project
- Timing of 90% benefits is driven by river conditions
- Coordination of project funded relocations
- Residual Risks
  - Pool 3 navigation channel siltation
  - Braddock Dam scour



U.S. ARMY

# PROGRESS PHOTOS-CHARLEROI RIVER CHAMBER



7

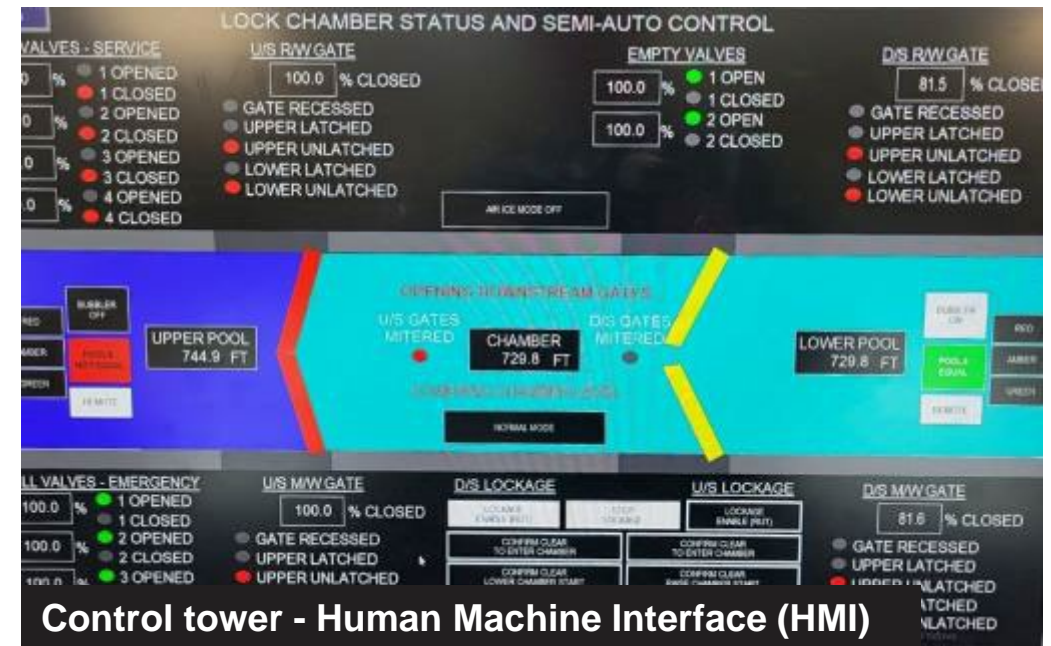


Lower approach into new lock

D/S coffer cell demolition

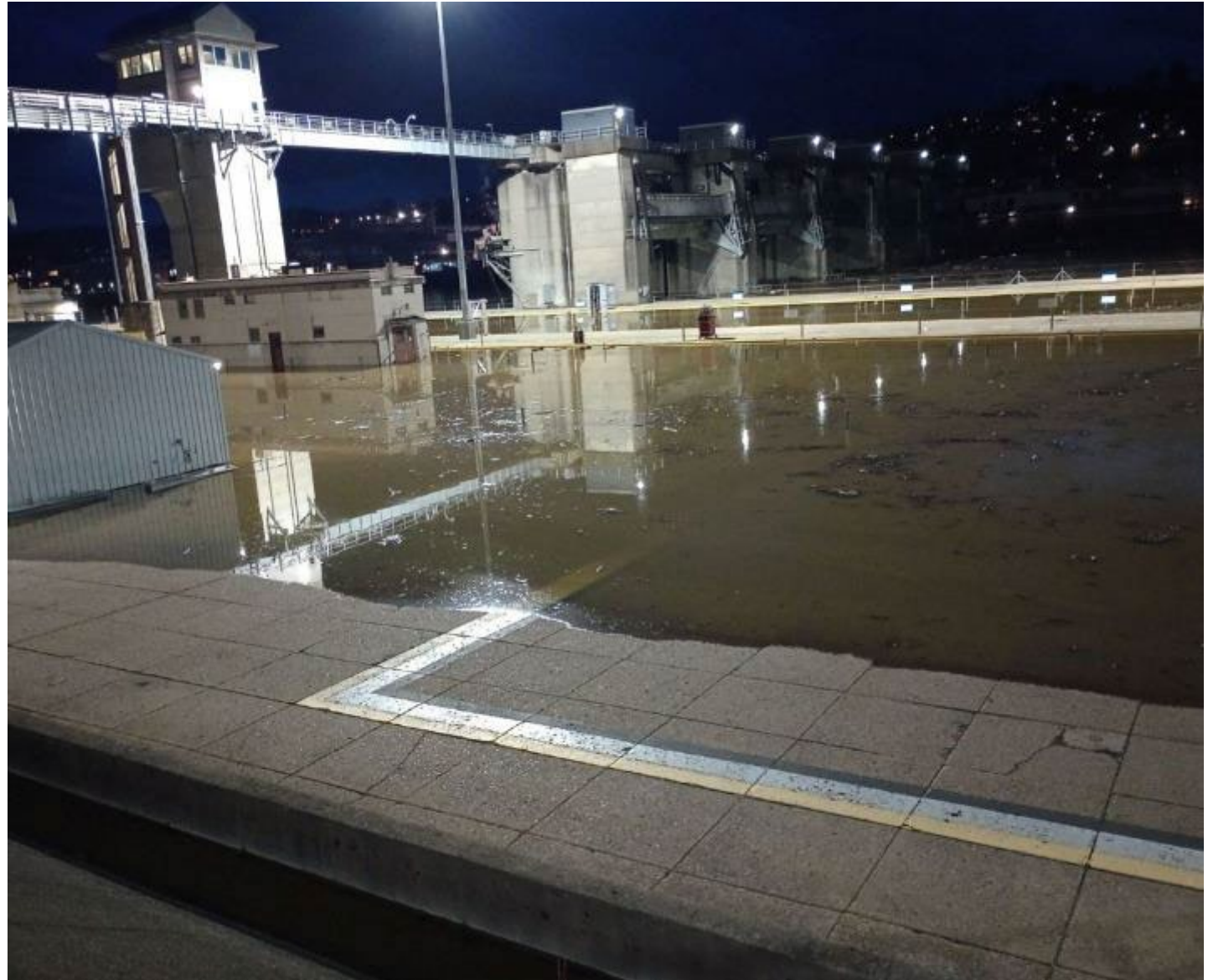


Guard wall panel pick





# FLOODING – CHARLEROI - OVERTOPPING WALLS







U.S. ARMY

# FLOODING - CHARLEROI D/S APPROACH

9





U.S. ARMY

# FLOODING - CHARLEROI U/S APPROACH

10







U.S. ARMY

# FLOODING - CHARLEROI FLOODED GALLERY

11

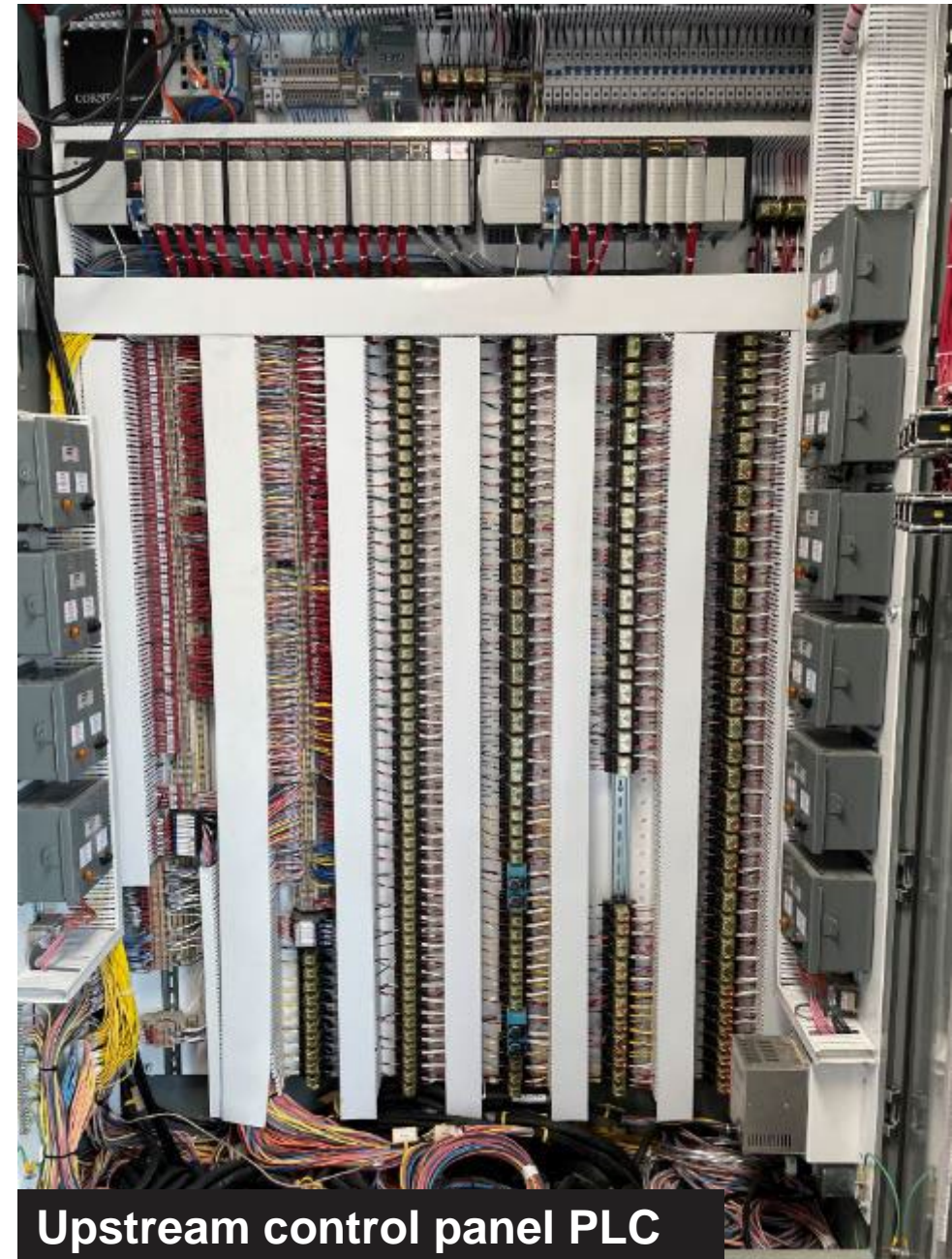






U.S. ARMY

# THANK YOU AND QUESTIONS



Upstream control panel PLC